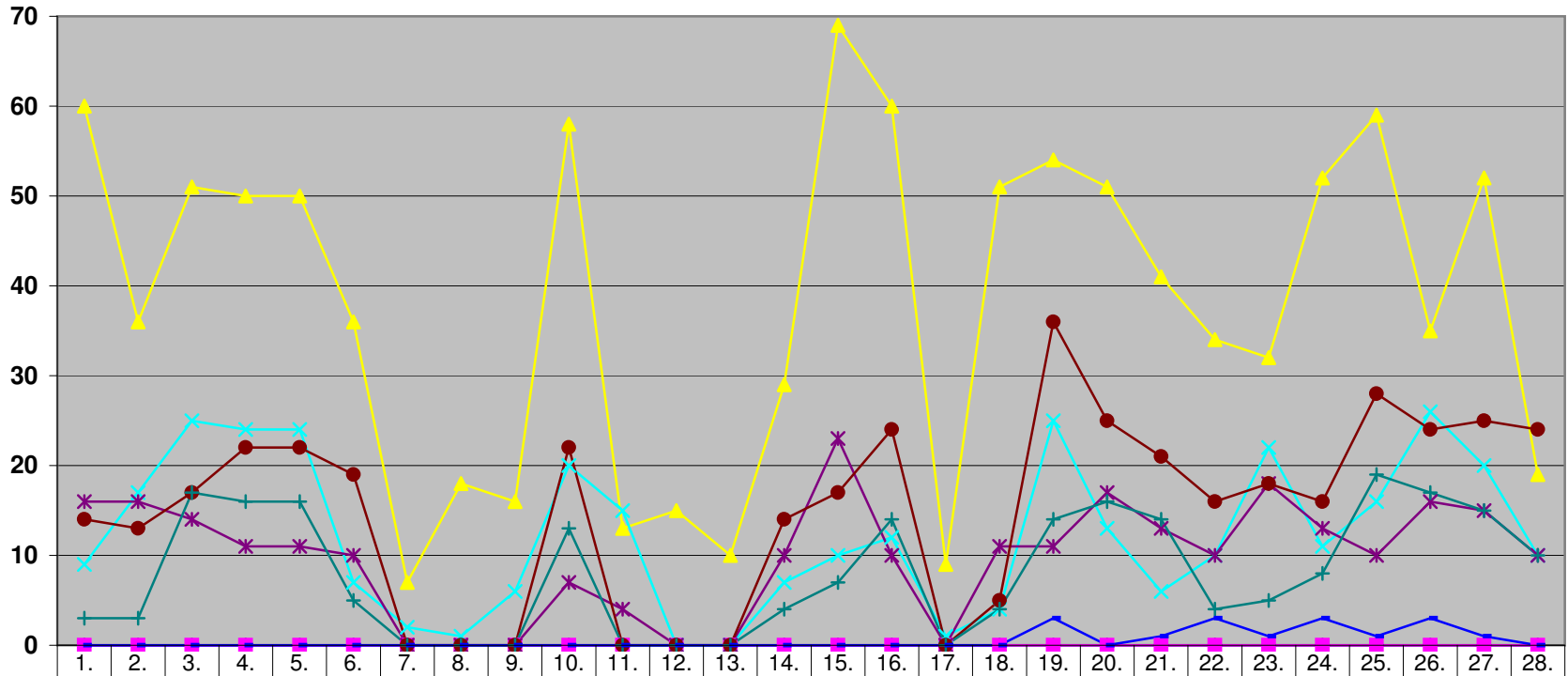
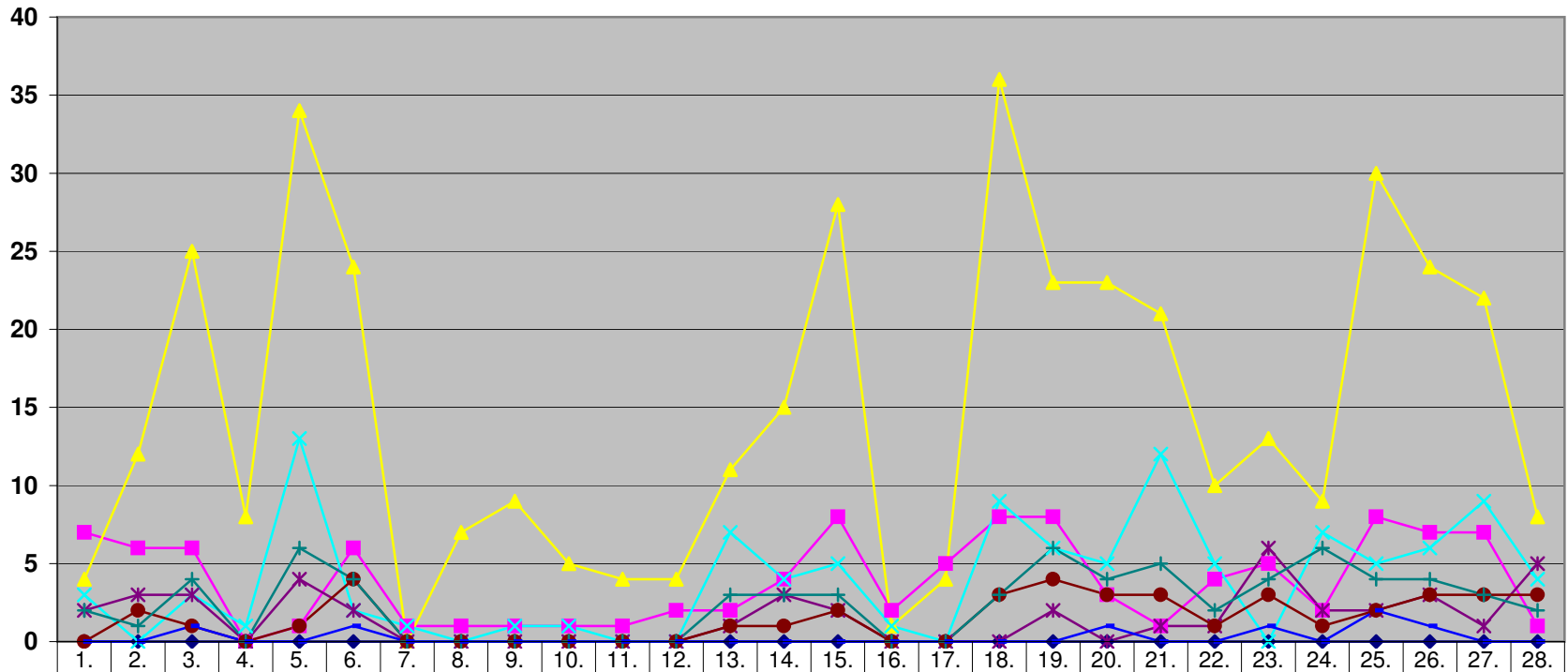


Flugbewegungen über Wicker am Tag 06-18 Uhr Februar 2010



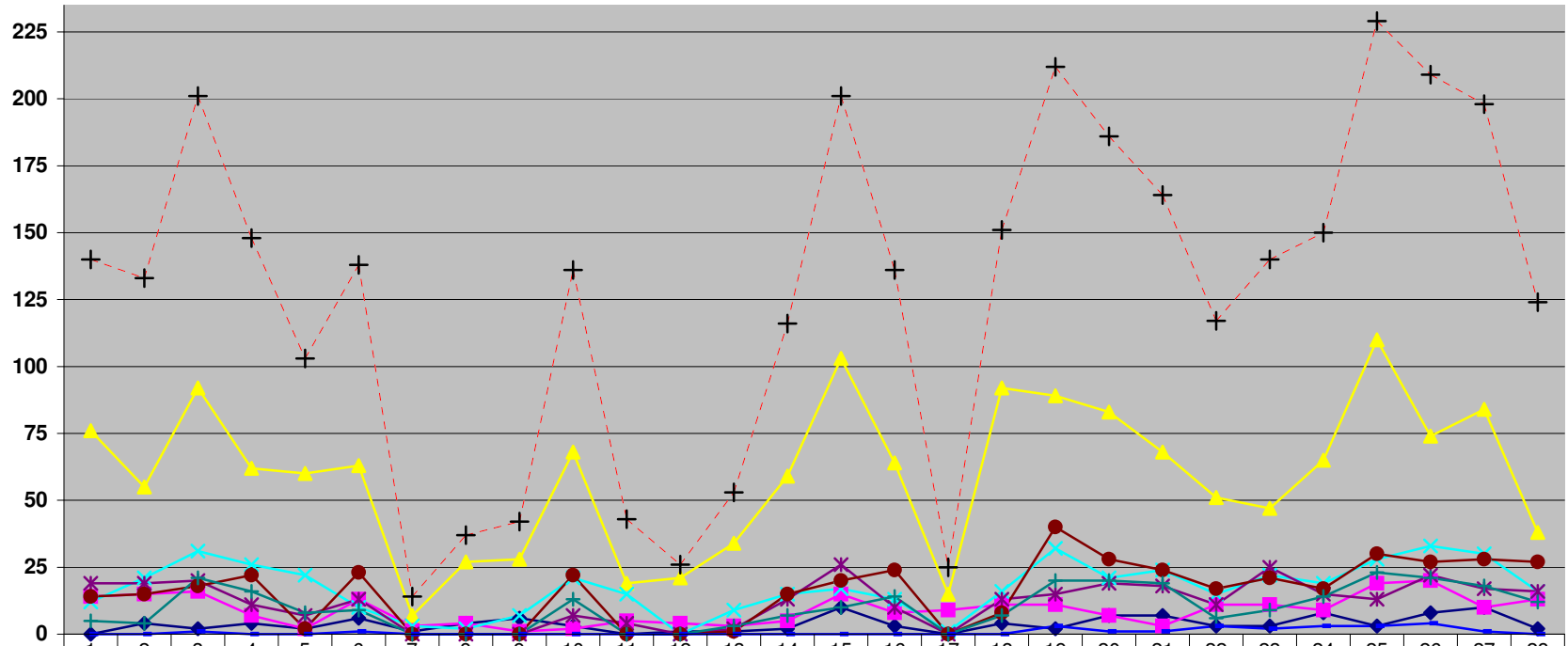
	1.	2.	3.	4.	5.	6.	7.	8.	9.	10.	11.	12.	13.	14.	15.	16.	17.	18.	19.	20.	21.	22.	23.	24.	25.	26.	27.	28.
50 - 60 dB	0	0	0	0	0	0	0	0	0	0	0	0	0	0	0	0	0	0	3	0	1	3	1	3	1	3	1	0
60 - 65 dB	0	0	0	0	0	0	0	0	0	0	0	0	0	0	0	0	0	0	0	0	0	0	0	0	0	0	0	0
65 - 70 dB	60	36	51	50	50	36	7	18	16	58	13	15	10	29	69	60	9	51	54	51	41	34	32	52	59	35	52	19
70 - 75 dB	9	17	25	24	24	7	2	1	6	20	15	0	0	7	10	12	1	4	25	13	6	10	22	11	16	26	20	10
75 - 80 dB	16	16	14	11	11	10	0	0	0	7	4	0	0	10	23	10	0	11	11	17	13	10	18	13	10	16	15	10
80 - 85 dB	14	13	17	22	22	19	0	0	0	22	0	0	0	14	17	24	0	5	36	25	21	16	18	16	28	24	25	24
85 - 90 dB	3	3	17	16	16	5	0	0	0	13	0	0	0	4	7	14	0	4	14	16	14	4	5	8	19	17	15	10
> 90 dB	0	0	0	0	0	0	0	0	0	0	0	0	0	0	0	0	0	0	3	0	1	3	1	3	1	3	1	0

Flugbewegungen über Wicker am Tagesrand 18-22 Uhr Februar 2010



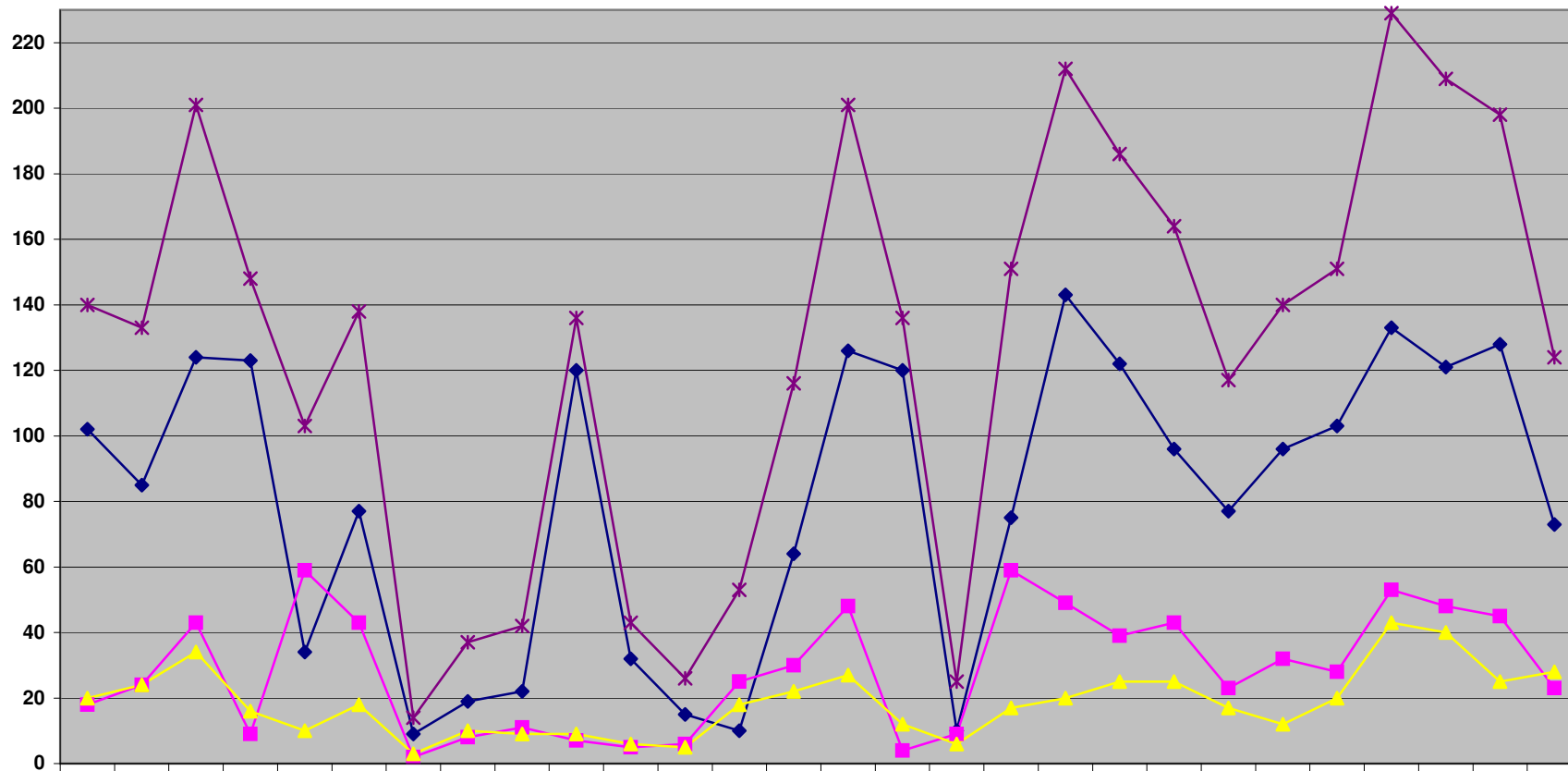
	1.	2.	3.	4.	5.	6.	7.	8.	9.	10.	11.	12.	13.	14.	15.	16.	17.	18.	19.	20.	21.	22.	23.	24.	25.	26.	27.	28.
◆ 50 - 60 dB	0	0	0	0	0	0	0	0	0	0	0	0	0	0	0	0	0	0	0	0	0	0	0	0	0	0	0	
■ 60 - 65 dB	7	6	6	0	1	6	1	1	1	1	1	2	2	4	8	2	5	8	8	3	1	4	5	2	8	7	7	1
▲ 65 - 70 dB	4	12	25	8	34	24	0	7	9	5	4	4	11	15	28	1	4	36	23	23	21	10	13	9	30	24	22	8
✕ 70 - 75 dB	3	0	3	1	13	2	1	0	1	1	0	0	7	4	5	1	0	9	6	5	12	5	0	7	5	6	9	4
✱ 75 - 80 dB	2	3	3	0	4	2	0	0	0	0	0	0	1	3	2	0	0	0	2	0	1	1	6	2	2	3	1	5
● 80 - 85 dB	0	2	1	0	1	4	0	0	0	0	0	0	1	1	2	0	0	3	4	3	3	1	3	1	2	3	3	3
+ 85 - 90 dB	2	1	4	0	6	4	0	0	0	0	0	0	3	3	3	0	0	3	6	4	5	2	4	6	4	4	3	2
— > 90 dB	0	0	1	0	0	1	0	0	0	0	0	0	0	0	0	0	0	0	0	1	0	0	1	0	2	1	0	0

Flugbewegungen über Wicker 24 Std. Februar 2010



◆ 50 - 60 dB	0	4	2	4	2	6	1	4	6	3	0	1	1	2	10	3	0	4	2	7	7	3	3	8	3	8	10	2
■ 60 - 65 dB	14	15	16	7	2	13	3	4	1	2	5	4	3	5	15	8	9	11	11	7	3	11	11	9	19	20	10	13
▲ 65 - 70 dB	76	55	92	62	60	63	7	27	28	68	19	21	34	59	103	64	15	92	89	83	68	51	47	65	110	74	84	38
✕ 70 - 75 dB	12	21	31	26	22	10	3	2	7	21	15	0	9	15	17	13	1	16	32	21	24	15	22	19	28	33	30	16
✱ 75 - 80 dB	19	19	20	11	7	13	0	0	0	7	4	0	2	13	26	10	0	13	15	19	18	11	25	15	13	22	17	16
● 80 - 85 dB	14	15	18	22	2	23	0	0	0	22	0	0	1	15	20	24	0	8	40	28	24	17	21	17	30	27	28	27
+ 85 - 90 dB	5	4	21	16	8	9	0	0	0	13	0	0	3	7	10	14	0	7	20	20	19	6	9	14	23	21	18	12
◆ > 90 dB	0	0	1	0	0	1	0	0	0	0	0	0	0	0	0	0	0	0	3	1	1	3	2	3	3	4	1	0
- - + - - Gesamt	140	133	201	148	103	138	14	37	42	136	43	26	53	116	201	136	25	151	212	186	164	117	140	150	229	209	198	124

Anzahl Überflüge Wicker Februar 2010



✱ Gesamt pro Tag	140	133	201	148	103	138	14	37	42	136	43	26	53	116	201	136	25	151	212	186	164	117	140	151	229	209	198	124
◆ Tag 06 - 18	102	85	124	123	34	77	9	19	22	120	32	15	10	64	126	120	10	75	143	122	96	77	96	103	133	121	128	73
■ Rand18 - 22	18	24	43	9	59	43	2	8	11	7	5	6	25	30	48	4	9	59	49	39	43	23	32	28	53	48	45	23
▲ Nacht 22 - 06	20	24	34	16	10	18	3	10	9	9	6	5	18	22	27	12	6	17	20	25	25	17	12	20	43	40	25	28

