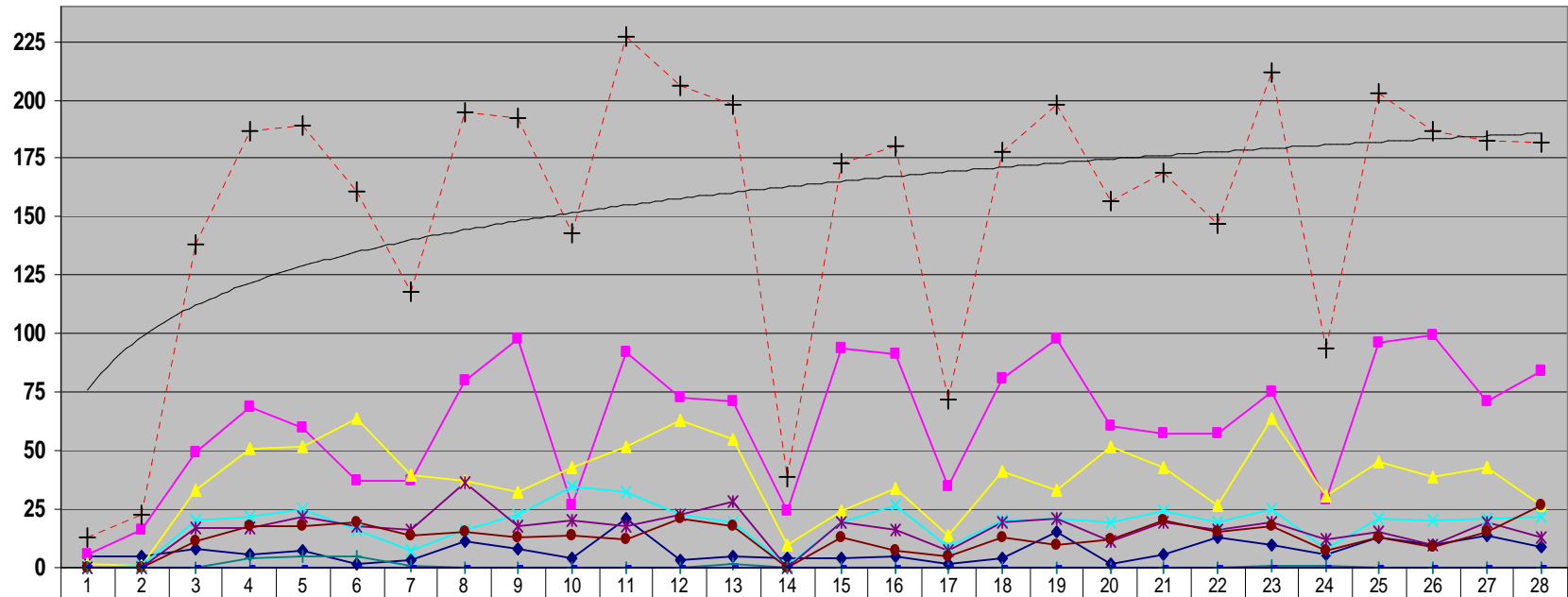


Flugbewegungen über Wicker 24 Std. Februar 2009



◆ 50 - 60 dB	5	5	8	6	7	2	3	11	8	4	21	3	5	4	4	5	2	4	15	2	6	13	10	6	13	10	6	13	10	14	9
■ 60 - 65 dB	6	16	49	69	60	37	37	80	98	27	92	73	71	24	94	91	35	81	98	61	57	57	75	29	96	99	71	84			
▲ 65 - 70 dB	2	1	33	51	52	64	40	37	32	43	52	63	55	10	24	34	14	41	33	52	43	27	64	31	45	39	43	27			
✕ 70 - 75 dB	0	1	20	22	25	16	7	16	23	35	32	23	19	1	19	27	9	20	21	19	24	19	25	8	21	20	21	22			
✱ 75 - 80 dB	0	0	17	17	22	18	16	36	18	20	18	23	28	0	19	16	7	19	21	11	19	16	19	12	15	10	19	13			
● 80 - 85 dB	0	0	11	18	18	19	14	15	13	14	12	21	18	0	13	7	5	13	10	12	20	15	18	7	13	9	15	27			
⊕ 85 - 90 dB	0	0	0	4	5	5	1	0	0	0	0	0	2	0	0	0	0	0	0	0	0	0	1	1	0	0	0	0	0		
— > 90 dB	0	0	0	0	0	0	0	0	0	0	0	0	0	0	0	0	0	0	0	0	0	0	0	0	0	0	0	0	0		
- - + - Gesamt	13	23	138	187	189	161	118	195	192	143	227	206	198	39	173	180	72	178	198	157	169	147	212	94	203	187	183	182			